

idine Smart 2.5 Installation Guide

Prerequisites to install and use idine Smart -

The list of software you need to have installed into you computer to be able to use idine smart on your PDA to create orders:

- **IIS server** - server to run and fetch the data and do manipulations as per users requirement

TIP: To check if your computer has IIS, click **Start** on your taskbar, then click **Run**. Type **inetmgr**. This should pop up the **Internet Services and Information** window, if it did not; there is no IIS on the computer.

- **idine version 2.5.0** (The desktop version to be installed in your computer)

.Net and My SQL database is required, these will be installed already if you have idine version 2.5.0

- **Active Sync** - to connect your PDA to the computer (server)
- **IP addresses** - addresses to connect PDA to Wi-Fi networks and servers (computers)

Creating and assigning IP addresses to devices (PDAs and computers) is a very crucial part during the installation and connection of idine smart. The number of IP addresses you may need depends on the number of devices, access points you create, printers, and PDAs:

It is advisable that you write down the series of IP addresses (preferably on a piece of paper) needed for all the required devices before assigning them.

Assigning IP addresses with particular series or a range to specific devices helps easy troubleshooting.

For example:

Systems/Desktops can have an IP range of:

192.168.0.1 to 192.168.0.20 (Notice the last numbers, **1-20**)

Thin-clients can have a range of:

192.168.0.21 to 192.168.0.30 (**21-30**)

Printers:

192.168.0.31 to **50**

Access Points:

192.168.0.51 to **70**

PDA's:

192.168.0.71 to 99

Others:

192.168.0.100 to **200**

For example - Should there be any issue with thin-clients, we know that the IPs assigned for thin-clients are between 192.168.0.21 - 30, so it makes troubleshooting easier when we know the IP address.

Important Tips –

- After you have decided on the list of IP addresses and have assigned them, you can then stick the paper that has the list on a board (**sticky or a notice board**) for future references.
- If you have multiple PDAs, assign names (**write a unique name on a piece of paper and stick with a tape on the back of your PDA**) to each one of them.
- Maintain a Microsoft Excel sheet in which you can type all the names of the PDAs and have it saved in a safe location (**D:**). Later, you will be adding the activation key next to each PDAs name. This will be helpful when the PDA crashes or if Windows or idinesmart has to be reinstalled, etc.

Since you have this list of Activation Code and Activation keys saved, when you reinstall or replace a new PDA, you can use the same code and key used before.

Example – (You can have these details in the Excel sheet)

PDA Name	Activation Code	Activation Key
HTC 1	ksfhIDNFLDKsfdkne==	KDndkjhwi=
HTC 2	abdgiDLEUIEZssdfn==	PLQknstw=

Downloading and extracting the required files from Innosolv

1. Launch Internet Explorer or any browser, and go to <http://www.innosolv-idine.com>.
2. Click and download the Installation files.

3. Right-click and unzip all the files into one single folder.

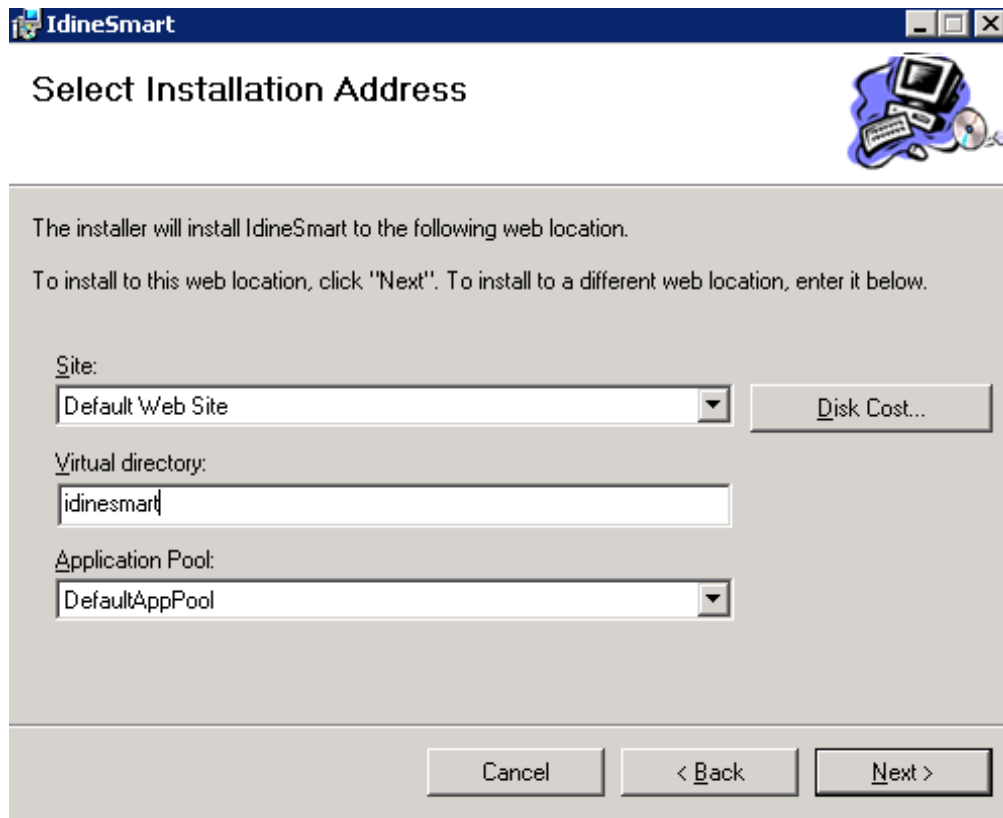
Note: If you download the help files, unzip all help files into one single folder.

Install idine smart

Install Active Sync to connect your PDA to computer (Desktop)

1. Browse to the **Active Sync.msi** file and double-click to install.
2. Click **Next** and follow the onscreen instructions and after installing, Active Sync requires a restart for your computer. Click **Yes** to restart your computer.
3. After the computer restarts, wait for a few minutes for the installation to complete.

Install idine web-service setup onto your computer



1. Browse into the folder where you have the unzipped files to access the **WebServiceSetup** folder and double-click the **setup.exe**.
2. In the **Virtual directory** box, type **idinesmart** and click **Next** and follow the onscreen instructions to complete the installation.

Copy idinesmart.cab file to your computer

1. Browse to the folder where the **idinesmart.cab** file is located, right-click and click **Copy** to copy the file.

Note: Please do not unzip the idinesmart.cab file.

2. On your **C:** drive, browse to the folder **C:\inetpub\wwwroot\ldineSmart** and right-click on an empty area within the window and click **Paste**.

Assign rights to the idine smart folder –

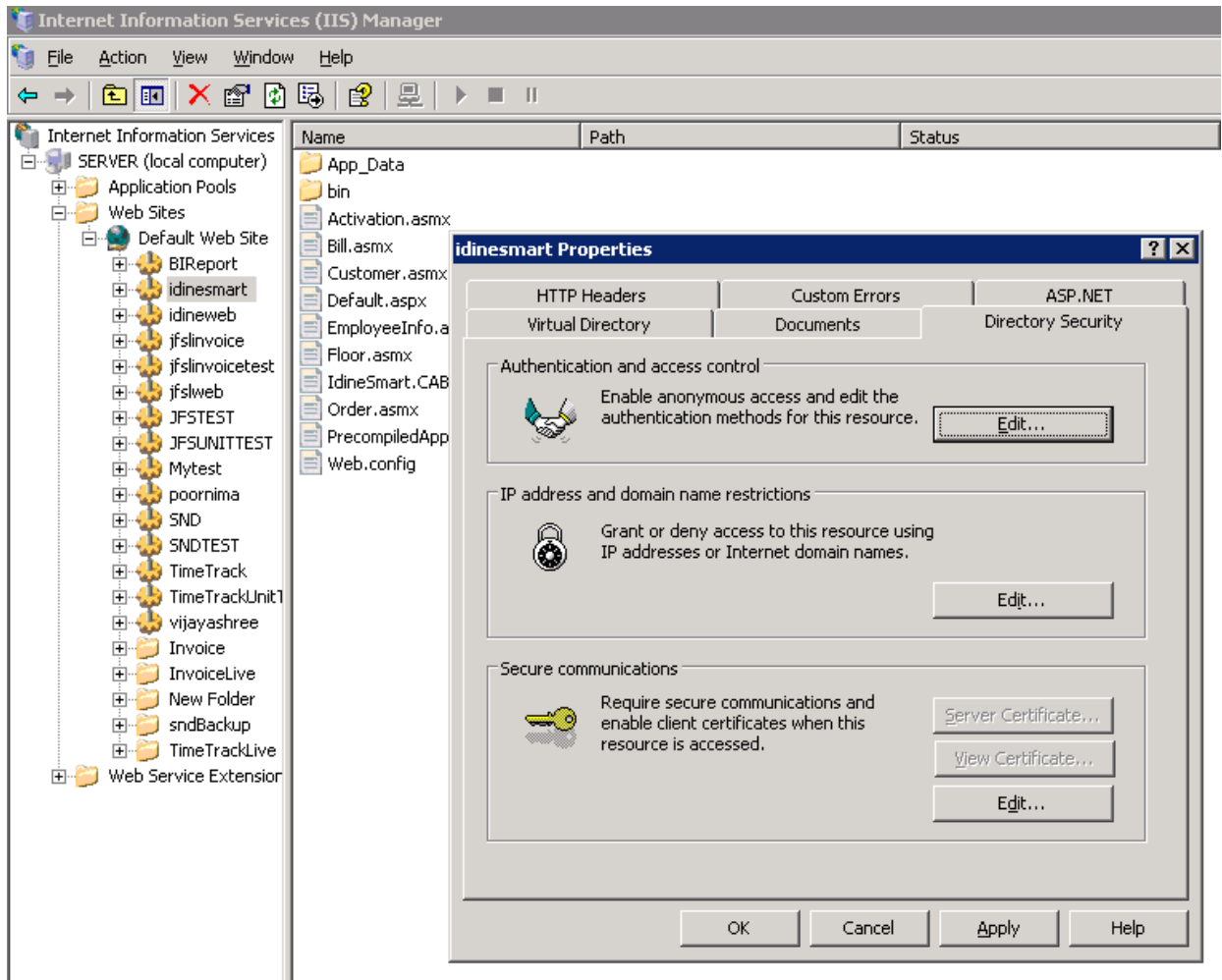
After you paste the idinesmart.cab file, click **Back** on your file-explorer or hit the **Backspace** key on your keyboard to access the path **C:\inetpub\wwwroot**. Now you should be able to see the idinesmart folder.

1. Right-click on the **idinesmart** folder and click **Properties**.
2. Click the **Security** tab.
3. In the **Group or user names** section, click a group or user to select.
4. In the **Permissions for** box, below **Allow**, click and place a check-mark. Ensure all check-boxes under **Allow** are checked. (This allows permission for the software to read, write, etc. for the files present inside that folder)
5. Click **Apply** and then click **OK** to close the window.

Publishing the web-service –

After installing IIS server and configuring the settings, install web setup in the server.

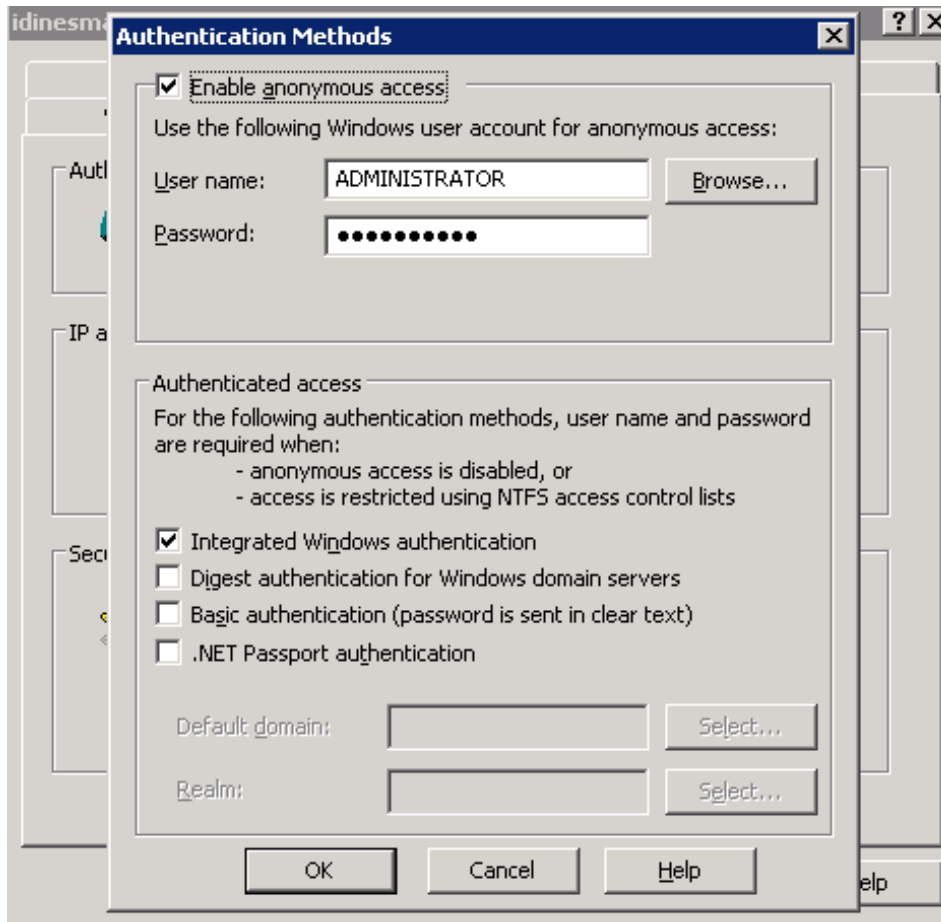
After installing you have to enable anonymous access



1. Hold the **Window** key down on your keyboard and hit the **R** key, or click the **Start** button and click **Run** to access the **Run** window.
2. In the **Open** field, type **inetmgr** and hit **Enter** on your keyboard or click **OK**.
3. In the **Internet Information Services** window, click and expand the list of your local computer (Usually it is your computer name), click **Websites** to expand the list, and then click **Default website** to expand the list.
4. On the left-pane, right-click on **idinesmart**, click **Properties**.

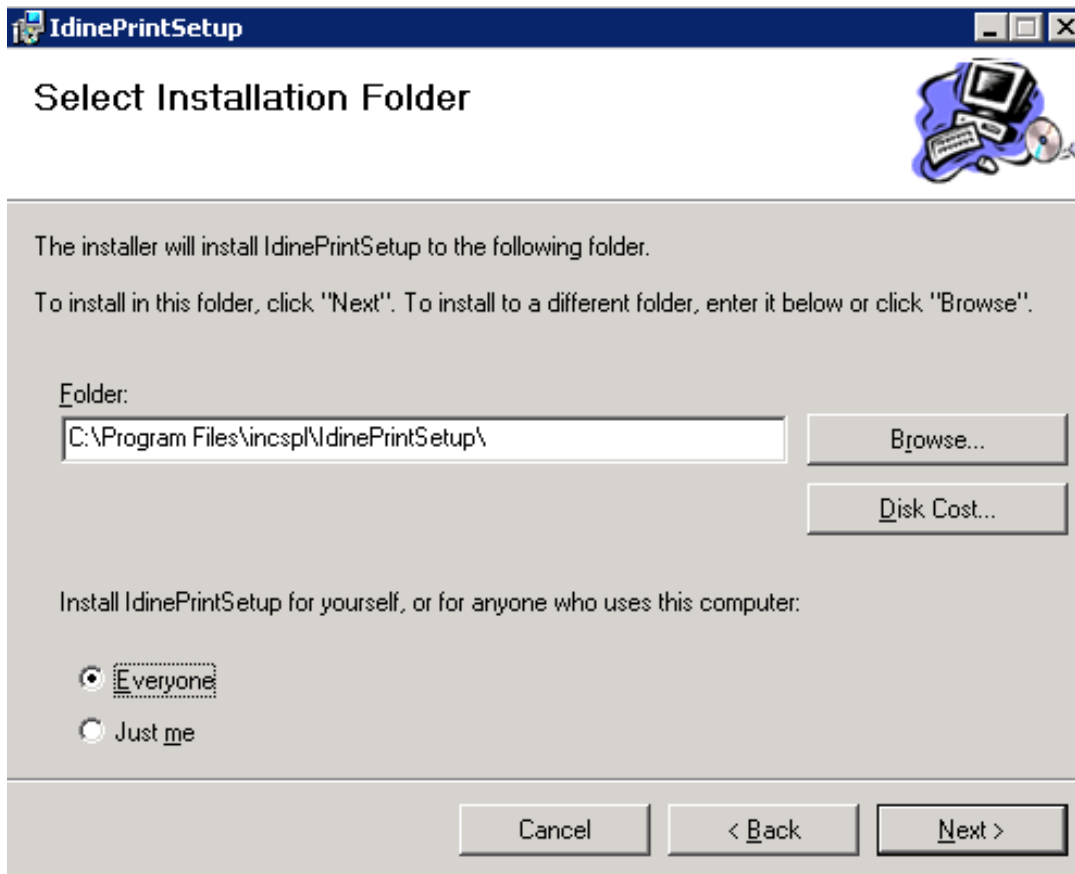
5. In the window that just popped up, click the **Directory Security** tab.
6. In the **Authentication and access** control section, click **Edit**.
7. Click and place a check-mark in the **Enable Anonymous access** check-box if it is not checked already.
8. In the **User name** box, type the Administrator user id of this computer, and in the **Password** box, type the password of Windows and click **OK** to save.

NOTE: You may have a restricted user's (who does not have administrator rights) login information in the user name and password field. Please clear the field and type the administrator's credentials. This means the administrator is allowing the application to run smoothly.



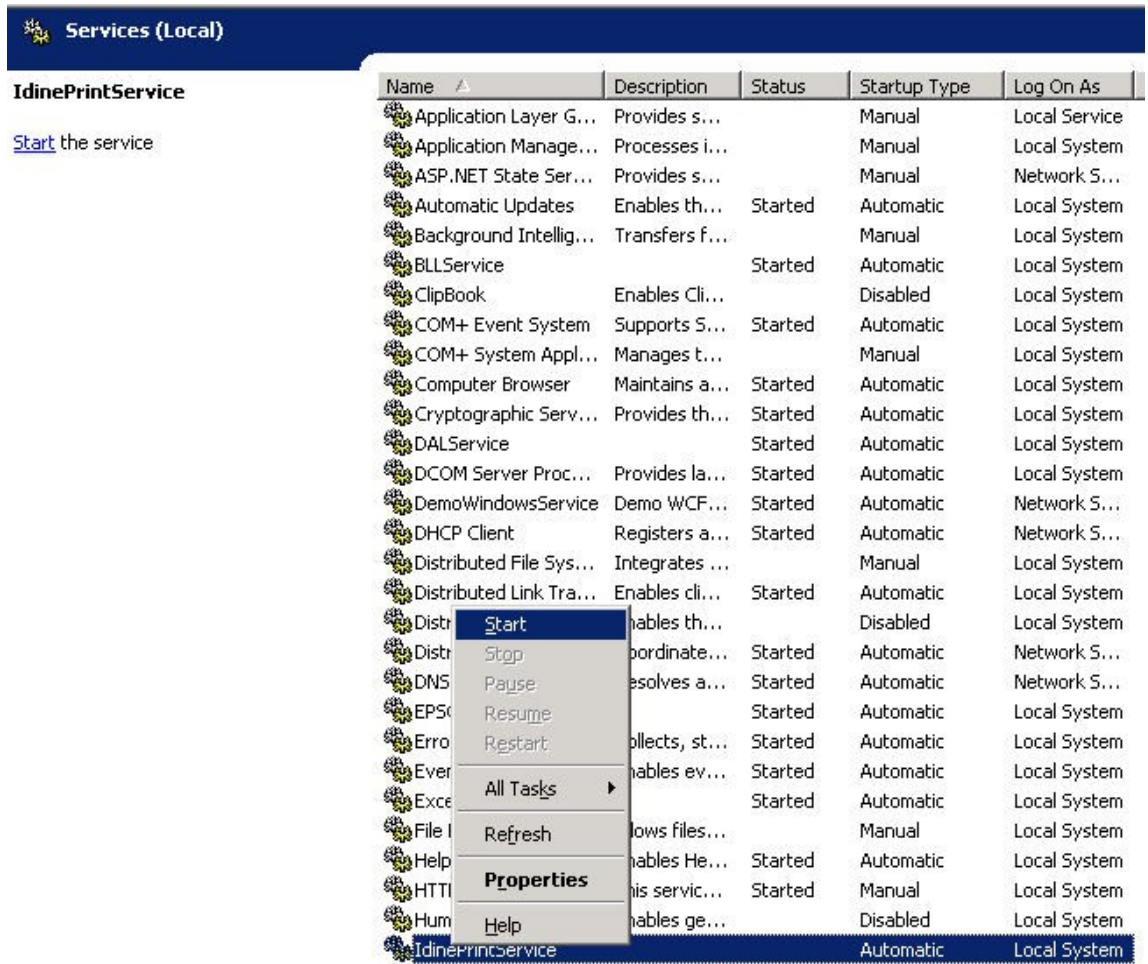
Install idine Print setup –

Install the Printer setup onto your computer.



1. Browse to the **ldinePrintSetup** folder and double-click the **setup.exe**.
2. Click **Next**, and then choose **Everyone** and click **Next** again.
3. Follow the onscreen instructions to complete the installation.

Start the IdinePrintService from your services that run on your computer –



1. Click **Start** and then click **Run**, or hold your **Windows** key down on your keyboard and then hit the **R** to access the **Run** window.
2. Type **services.msc** and click **OK** or hit **Enter** on your keyboard.
3. In the **Services** window, scroll down the list and locate **IdinePrintService**.
4. Right-click on **IdinePrintService** and click **Start** to start the service so you will be able to print.

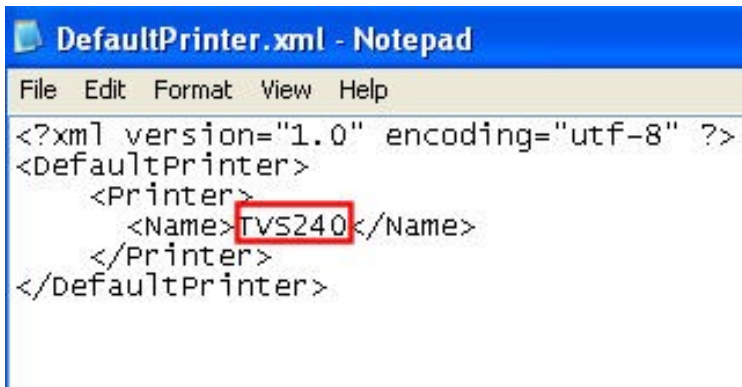
NOTE: Confirm if the service has been started by checking its status from the **Status** column.

5. Close all the windows.

Specify printer's name that you would be using to print, in the configuration file

1. Click **Start** and then click **Run**.
2. Type **inetmgr** and click **OK**.
3. From the **Internet Information Services** window, right-click on **idinesmart** and click **Open**.
4. Double-click and open the **App_Data** folder.
5. Right-click on the **DefaultPrinter.xml** file and open it with **Notepad**.
6. Type the name of the printer which is attached to the current computer.

Example –



```
DefaultPrinter.xml - Notepad
File Edit Format View Help
<?xml version="1.0" encoding="utf-8" ?>
<DefaultPrinter>
  <Printer>
    <Name>TVS240</Name>
  </Printer>
</DefaultPrinter>
```

Note: Please do not change/edit any code in this notepad file.

The name marked in red should be replaced with the name of your printer.

Turn on Wi-Fi and connect to a wireless network (Setting IP addresses) –

1. Go to the Home screen on the PDA, slide to **Settings** tab and then tap **Wireless Controls**.
2. Tap on the **Wi-Fi connect** to turn-on **Wi-Fi**.
3. Click and select the desired Wi-Fi connection you wish to connect to.
4. Tap the **Advanced** tab on the bottom right.
5. Click on **Change Network**, and click on the **Network Adapters**.
6. Click on **Edit** on the bottom of the screen and select **Use specific IP address**.
7. Type the **IP address**, **Subnet Mask**, and **Default gateway**. (It should be in the same series)

E.g.

IP address - 192.168.0.12

Subnet Mask - 255.255.255.0

Default gateway - 192.168.0.12

8. Click **OK** on the top right-corner of your screen to save the addresses and close all other screens.

Note: If you already have the IP addresses assigned, on clicking the desired network to connect, you'll be prompted for a **Security Key**.

9. After typing the **Security Key**, tap **Done** to connect to the wireless network.

Download and Install idine smart –

Now that you have connected your PDA to the Wi-Fi network, download the idinesmart application to your PDA.

1. On your PDA, from the Home screen, launch **Internet Explorer** browser.
2. In the address bar, type [http://\(server-IP\)/idinesmart](http://(server-IP)/idinesmart).

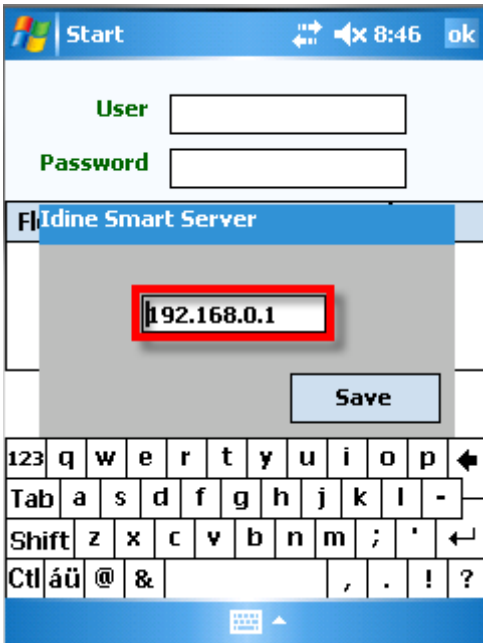
Note: Server IP will be the IP address of your computer which is the server (E.g. 192.168.7.1)

3. Click the **Install** link, and click **Yes** to confirm the installation and
4. Click **OK** on the top right of the screen to close all screens and come back to the main screen.
5. Scroll down and locate the idine icon, hold and press the icon down for a few seconds. (You will get an option – **Move to Top**)
6. Tap the option **Move to Top**. (This will move the idine icon to the top of the other available icons; this makes it easier to access the application)

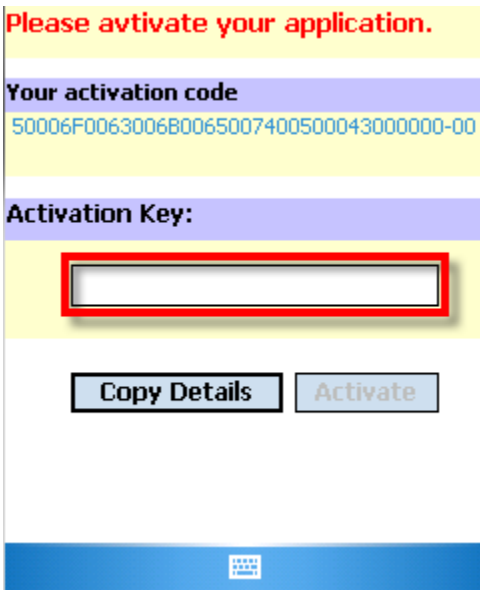
Idinesmart Activation –

After installing the idinesmart application onto your PDA, you have to activate it with a key to be able to use it.

1. Click and launch the idinesmart application on your PDA.
2. Type the server IP address and click **Save**.



3.



Click **Copy Details**. This will automatically create a text file on your computer with the activation code in it.

The text file will be located in your hard-drive at **C:\ACTIVATION_DETAILS**.

NOTES:

- a. Please rename that text file immediately with the name you have assigned to your PDA (should be at the back of your PDA). This avoids confusion; you will exactly know which PDA is using which activation key.
- b. Type this activation code in the master Excel file, next to the PDA name. This will be very useful for future references.
- c. If you have multiple PDAs, you can connect them one by one and click **Copy Details** and follow the above steps for each individual PDA.

Email the text file to supportsrpl.idine@incspl.com. You will receive an activation key for the code you sent.

Copy and paste this key in the master Excel sheet next to the PDA name.

Example –

If you had requested an activation key for PDA 1, then paste the activation key you received next to the PDA 1 column in your excel sheet.

Example – (You can have these details in the Excel sheet)

PDA Name	Activation Code	Activation Key
HTC 1	ksfhIDNFLDK==	KDndkjhwi=

After you receive the key, launch idine smart and type it in the **Activation Key** box. You will now be able login to a branch and punch in orders.

Updating the web service –

You have to remove the existing web setup from your computer and then install a new copy.

To remove the web setup:

1. Click the **Start** menu and then click **Control Panel**.
2. Double-click and launch the **Add or Remove Programs**.
3. Scroll down and select the **idinesmart** and click **Change/Remove**.
4. Follow onscreen instructions to remove the program from your computer.

Update idine smart –

When you install idine smart from our website, automatically the old version gets removed and it installs the new copy.

1. Launch Internet Explorer on your PDA and go to <http://www.innosolv-idine.com/smart> .
2. Click and download the .cab file and follow the onscreen instructions.

Note: If you are unable to follow the process or if you're not sure if the old version has been removed, follow these instructions on your PDA.

1. From the home screen, tap **Settings**.
2. Tap **Manage Programs**, and then tap **Remove Programs**.
3. Click **Remove Programs** and select **IdineSmart** and click **Remove**.

You can now go to the link and download the new version.

PDA Display Settings

1. On the main screen, tap **Settings**.
2. Tap **Sound and Display** settings.
3. Scroll down to **Back light adjustment** and uncheck the option.

Remove or uninstall idine smart from your PDA

1. On the main screen, tap **Settings**.
2. Tap **Applications** then tap **Remove Programs**.
3. Tap and select idine smart application and then tap **Remove**.